

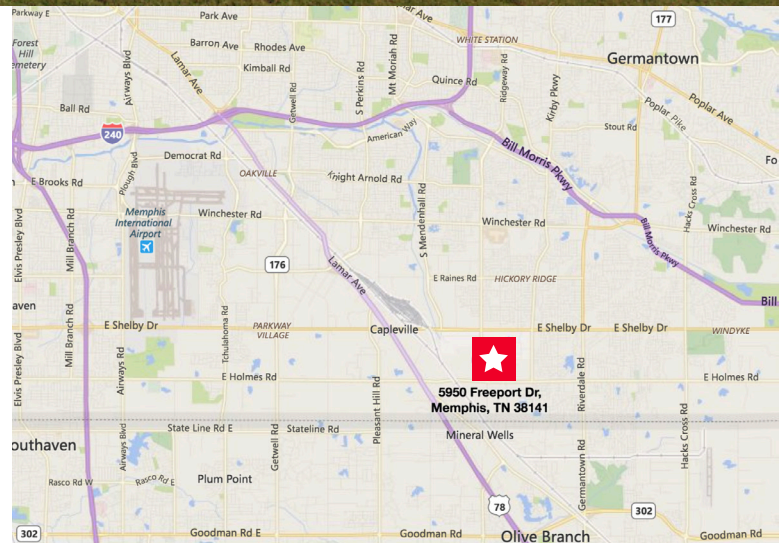


Industrial Space for Lease
22,816 SF Available in SE Submarket

Property Highlights

- End Cap
- 24' clear
- 587 sf office
- Five (5) dock high doors
- One drive-in door
- 210' deep
- 40' x 40' column spacing (50' speed bays)
- ESRF

Mark Jenkins, SIOR, CCIM
Principal
+1 901 362 9870
mjenkins@commadv.com

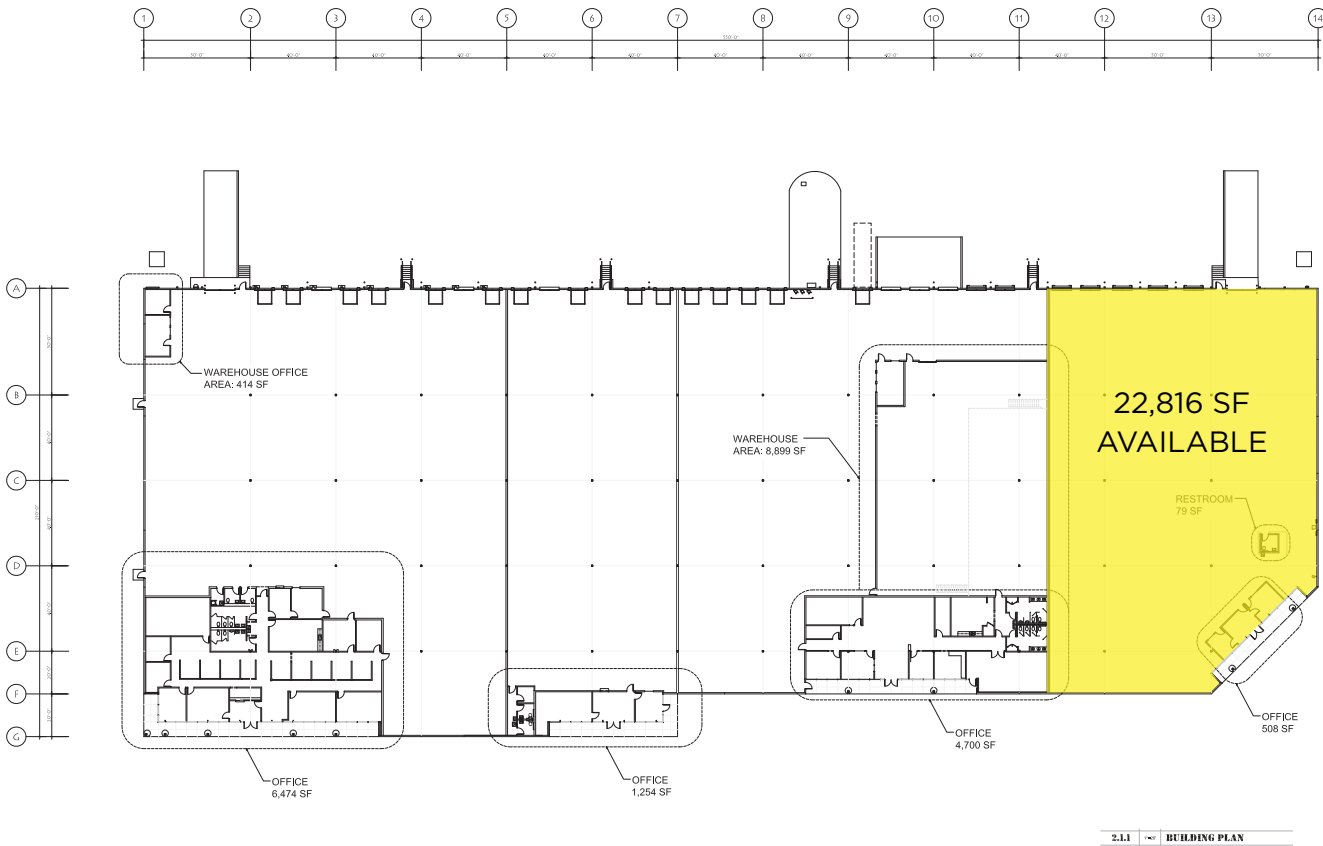


5101 Wheelis Drive, Suite 320
Memphis, TN 38117
Main +1 901 683 0808
www.commadv.com

Independently Owned and Operated / A Member of the Cushman & Wakefield Alliance

Cushman & Wakefield Copyright 2015. No warranty or representation, express or implied, is made to the accuracy or completeness of the information contained herein, and same is submitted subject to errors, omissions, change of price, rental or other conditions, withdrawal without notice, and to any special listing conditions imposed by the property owner(s). As applicable, we make no representation as to the condition of the property (or properties) in question.

**Chickasaw Distribution Center
Building A
5950 Freeport / Memphis TN**



2.11 BUILDING PLAN

REVISIONS



ASBUILT
5950 FREEPORT
MEMPHIS, TENNESSEE



BY: JJA	DATE: 08/14/18
APP: JJA	DATE: 08/14/18
CHK: JJA	DATE: 08/14/18
DATE: 08/14/18	
A1	
1 / TOTAL PLAN	

Mark Jenkins, SIOR, CCIM
Principal
+1 901 362 9870
mjenkins@commadv.com

5101 Wheelis Drive, Suite 320
Memphis, TN 38117
Main +1 901 683 0808
www.commadv.com

Independently Owned and Operated / A Member of the Cushman & Wakefield Alliance

Cushman & Wakefield Copyright 2015. No warranty or representation, express or implied, is made to the accuracy or completeness of the information contained herein, and same is submitted subject to errors, omissions, change of price, rental or other conditions, withdrawal without notice, and to any special listing conditions imposed by the property owner(s). As applicable, we make no representation as to the condition of the property (or properties) in question.