



FOR LEASE

# Century Center - Building F

1610 Century Center Pkwy  
Memphis, TN 38134  
Northeast Submarket

**New Vacancy!**

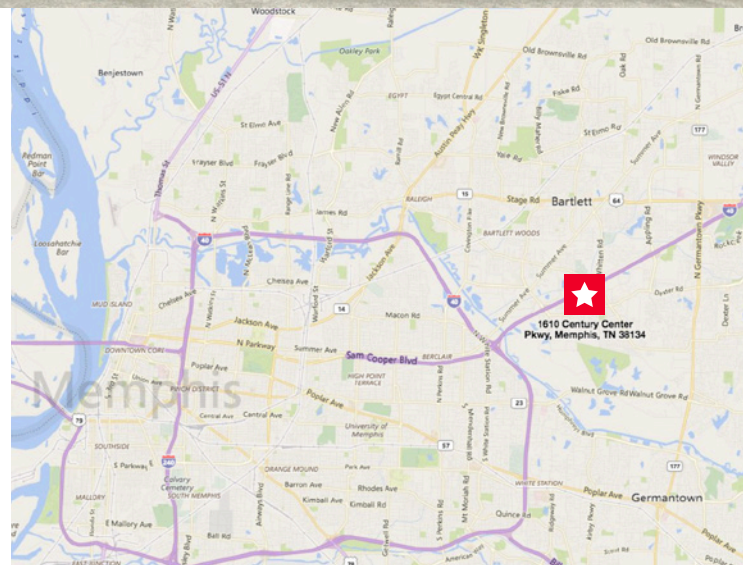


## Office Space for Lease

14,548 SF Available

### Property Highlights

- Immediate access to I-40 and I-240
- Building signage available
- Total Building Size: 48,495 SF
- 24/7 onsite security plus SkyCop camera system
- Parking Ratio: 5.64/1,000 SF with additional space available
- Office park setting with top-tier corporate neighbors



### Availabilities

Suite 102

14,548 SF

**Bentley Pembroke, SIOR**  
Vice President  
901 362 3599  
bpembroke@commadv.com

**Patrick Walton, SIOR**  
Principal  
901 362 4311  
pwalton@commadv.com

5101 Wheelis Drive, Suite 320  
Memphis, TN 38117  
Main: 901 683 0808  
[www.commadv.com](http://www.commadv.com)

*Independently Owned and Operated / A Member of the Cushman & Wakefield Alliance*

Cushman & Wakefield Copyright 2015. No warranty or representation, express or implied, is made to the accuracy or completeness of the information contained herein, and same is submitted subject to errors, omissions, change of price, rental or other conditions, withdrawal without notice, and to any special listing conditions imposed by the property owner(s). As applicable, we make no representation as to the condition of the property (or properties) in question.

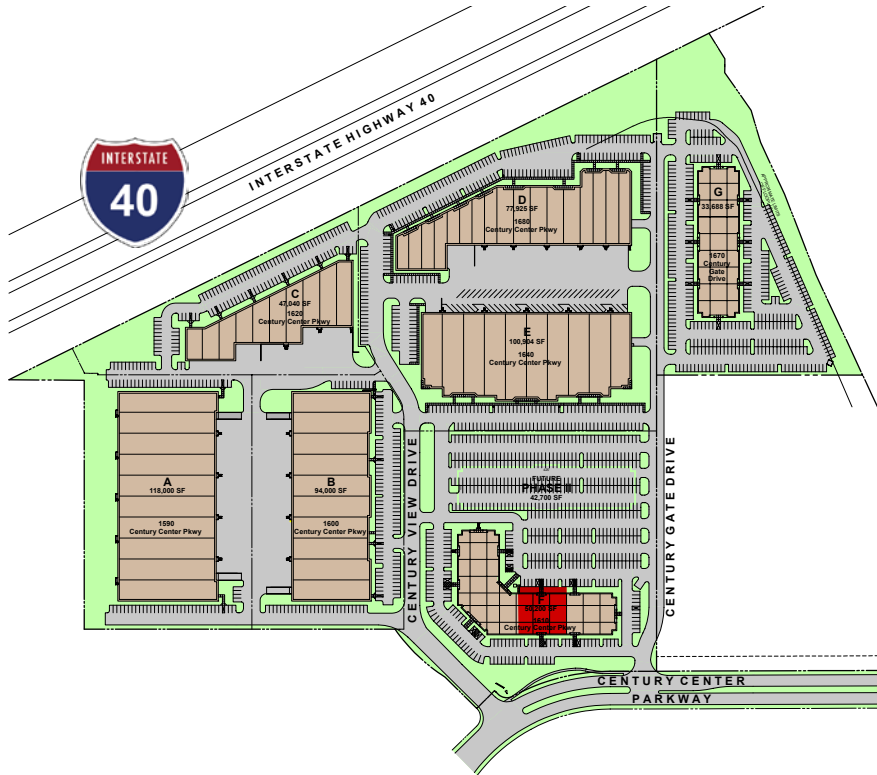


FOR LEASE

# Century Center - Building F

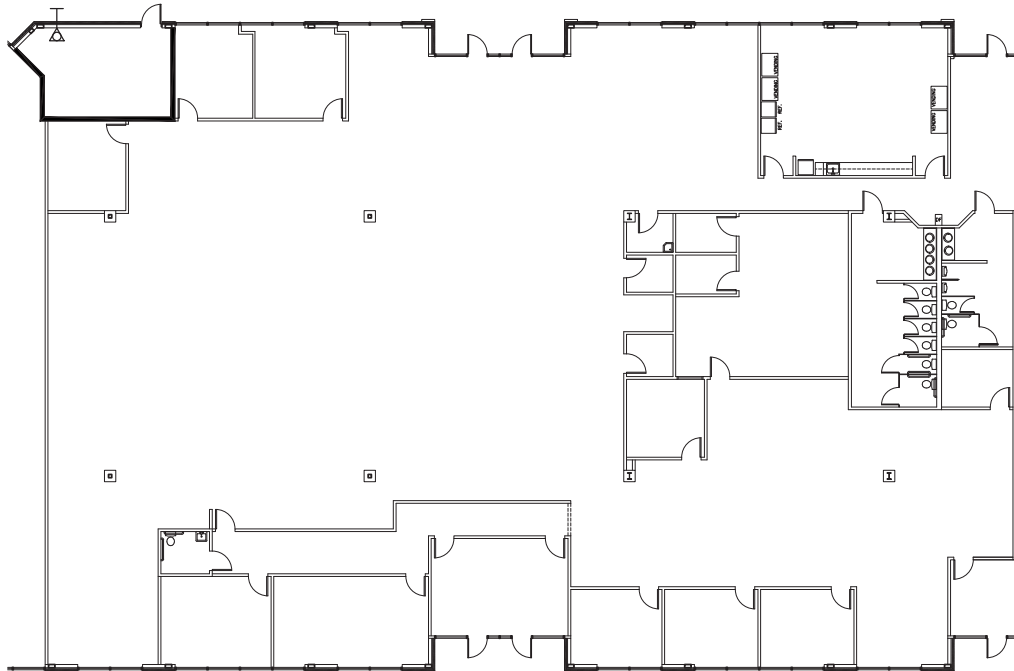
1610 Century Center Pkwy  
Memphis, TN 38134  
Northeast Submarket

## Site Plan



## Floor Plan

14,548 SF (As-Built)



**Bentley Pembroke, SIOR**  
Vice President  
901 362 3599  
bpembroke@commadv.com

**Patrick Walton, SIOR**  
Principal  
901 362 4311  
pwalton@commadv.com

5101 Wheelis Drive, Suite 320  
Memphis, TN 38117  
Main: 901 683 0808  
[www.commadv.com](http://www.commadv.com)

*Independently Owned and Operated / A Member of the Cushman & Wakefield Alliance*

Cushman & Wakefield Copyright 2015. No warranty or representation, express or implied, is made to the accuracy or completeness of the information contained herein, and same is submitted subject to errors, omissions, change of price, rental or other conditions, withdrawal without notice, and to any special listing conditions imposed by the property owner(s). As applicable, we make no representation as to the condition of the property (or properties) in question.