



FOR LEASE

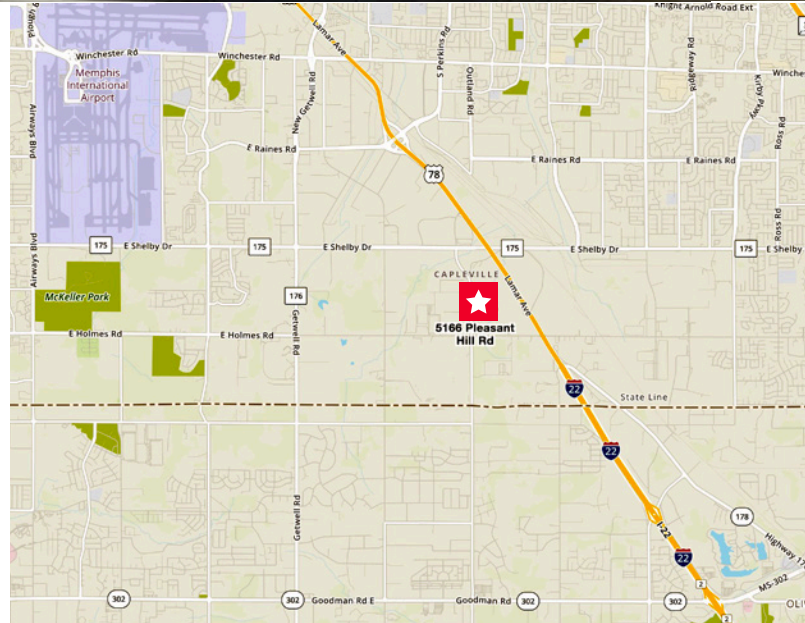
Southpoint Distribution Center 5166 Pleasant Hill | Memphis, TN 38118

32' CLEAR HEIGHT



Property Highlights

- Year built: 2000
- Available space for lease: 648,750 +/- SF (Expandable)
- Approximately 22,500 SF of office space (11,260 SF main office, 8,000 SF lobby/break room, 2,600 SF warehouse office, 2 truckers lounges, 3 separate warehouse restrooms)
- 32' clear height
- T5 lighting
- Cross dock
- ESFR sprinkler system
- 132 dock doors (9'x10') (51 with pit levelers)
- 6 drive-in doors
- 50' x 50' column spacing
- Building depth: 450'
- Truck courts: 130'
- Adjacent site available for building expansion and/or additional car/trailer parking



Mark Jenkins, SIOR, CCIM
Principal
901 362 9870
mjenkins@commadv.com

5101 Wheelis Drive, Suite 320
Memphis, TN 38117
Main: 901 683 0808
www.commadv.com

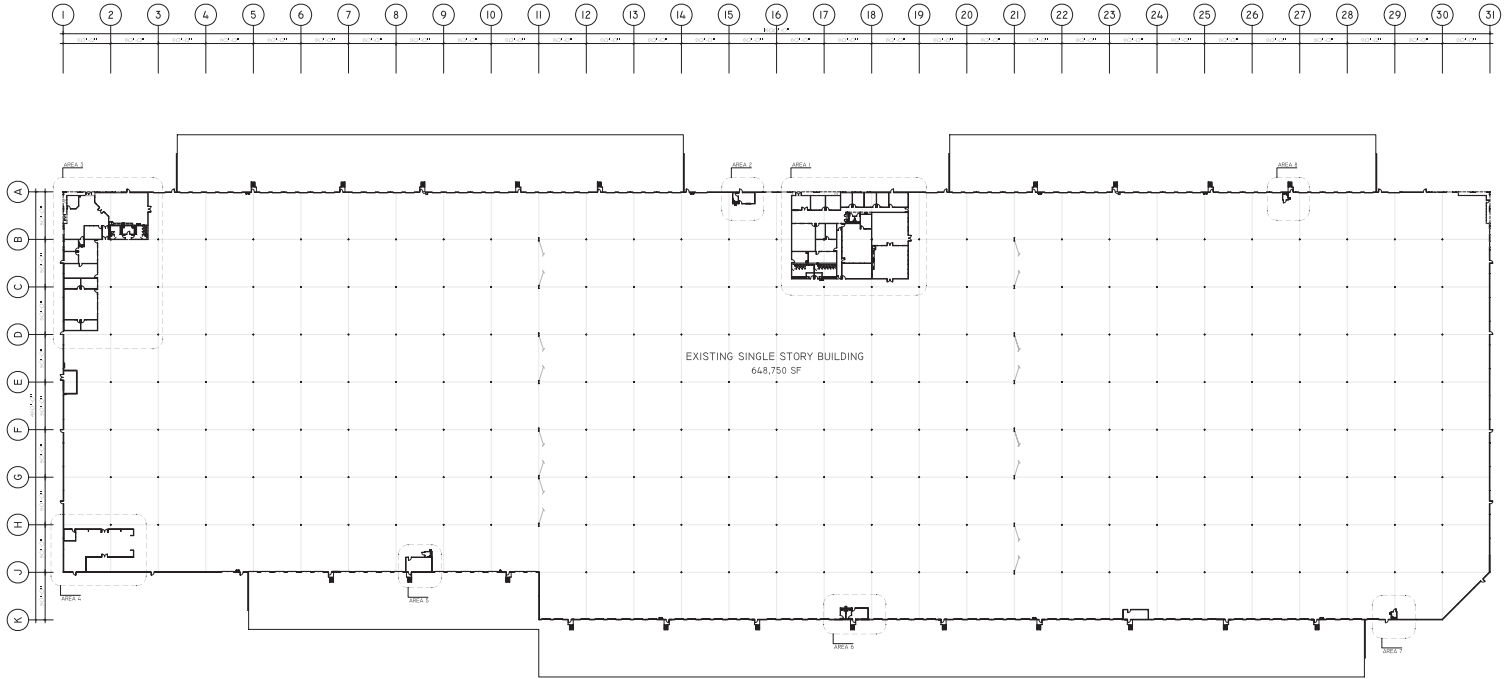
Independently Owned and Operated / A Member of the Cushman & Wakefield Alliance

Cushman & Wakefield Copyright 2015. No warranty or representation, express or implied, is made to the accuracy or completeness of the information contained herein, and same is submitted subject to errors, omissions, change of price, rental or other conditions, withdrawal without notice, and to any special listing conditions imposed by the property owner(s). As applicable, we make no representation as to the condition of the property (or properties) in question.

FOR LEASE

Southpoint Distribution Center

5166 Pleasant Hill | Memphis, TN 38118



Mark Jenkins, SIOR, CCIM
Principal
901 362 9870
mjenkins@commadv.com

5101 Wheelis Drive, Suite 320
Memphis, TN 38117
Main: 901 683 0808
www.commadv.com

Independently Owned and Operated / A Member of the Cushman & Wakefield Alliance

Cushman & Wakefield Copyright 2015. No warranty or representation, express or implied, is made to the accuracy or completeness of the information contained herein, and same is submitted subject to errors, omissions, change of price, rental or other conditions, withdrawal without notice, and to any special listing conditions imposed by the property owner(s). As applicable, we make no representation as to the condition of the property (or properties) in question.